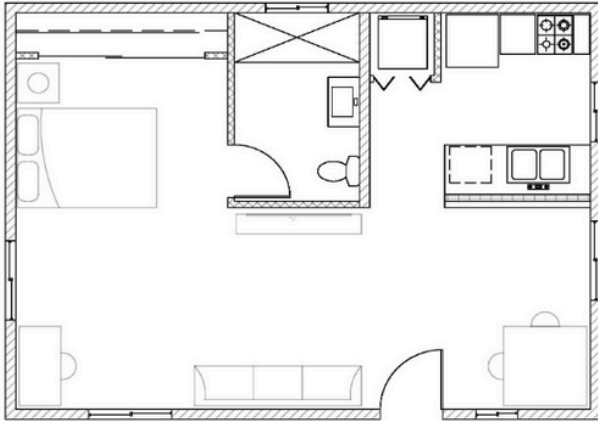


SAN DIEGO COUNTY

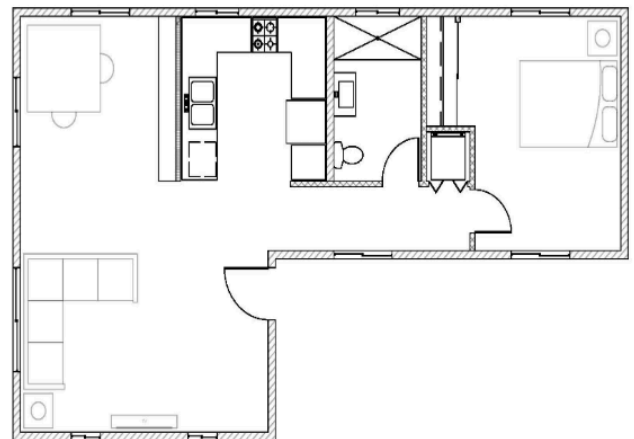
Several cities in San Diego County have pre-approved ADU (Accessory Dwelling Unit) plans to make building a backyard home easier and more affordable. These "Permit-Ready ADU" programs help homeowners skip a lot of the red tape by offering free or low-cost blueprints that are 85% complete and meet city requirements.

These programs help homeowners save time and money by reducing paperwork and approval wait times. If you're thinking about adding a rental unit or guest house in San Diego County, these plans make it easier to get started.



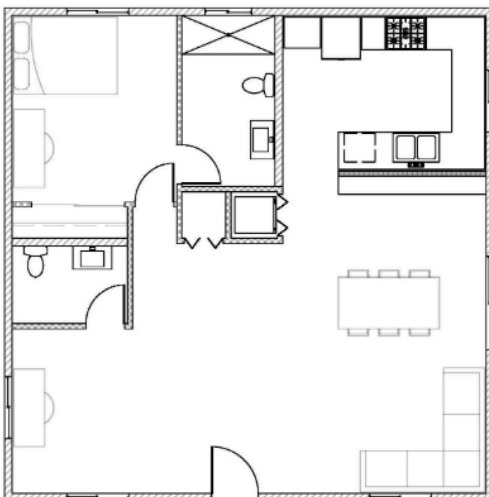
1 BED / 1 BATH

>>> 600 sqft



1 BED / 1 BATH

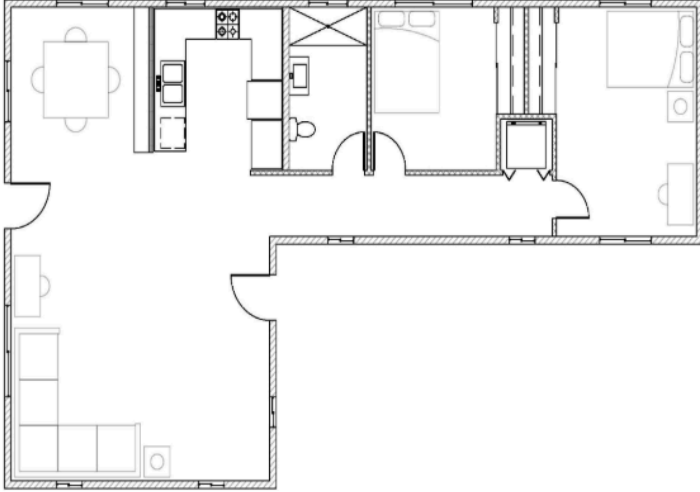
>>> 800 sqft



1 BED / 1.5 BATH

>>> 1,000 sqft

SAN DIEGO COUNTY

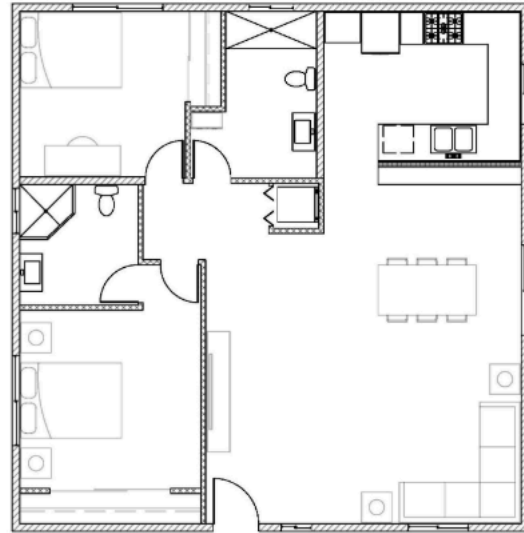


2 BED / 1 BATH

>>> 1,200 sqft

2 BED / 2 BATH

>>> 1,200 sqft



3 BED / 1 BATH

>>> 1,200 sqft

