

**The City of San Diego accepts
permit-ready ADU plans from
Encinitas, San Diego County,
and Chula Vista.**

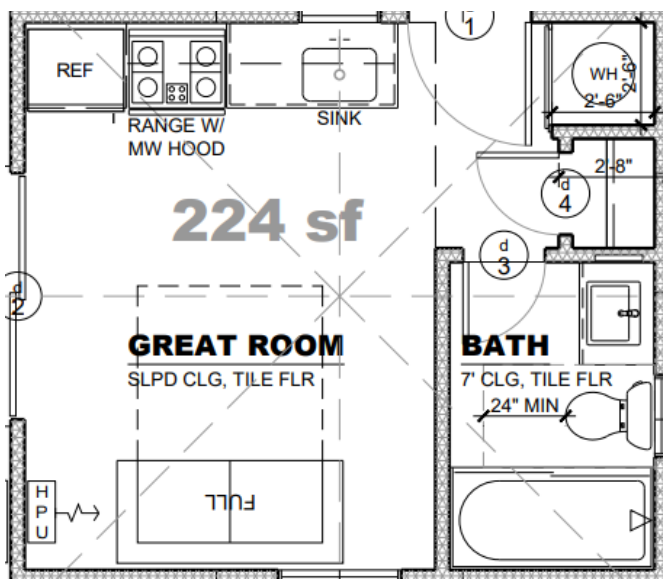
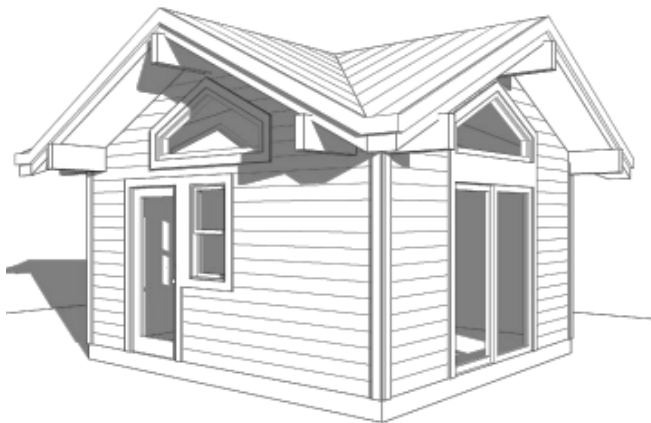
ENCINITAS

Several cities in San Diego County have pre-approved ADU (Accessory Dwelling Unit) plans to make building a backyard home easier and more affordable. These "Permit-Ready ADU" programs help homeowners skip a lot of the red tape by offering free or low-cost blueprints that are 85% complete and meet city requirements.

These programs help homeowners save time and money by reducing paperwork and approval wait times. If you're thinking about adding a rental unit or guest house in Encinitas, these plans make it easier to get started.

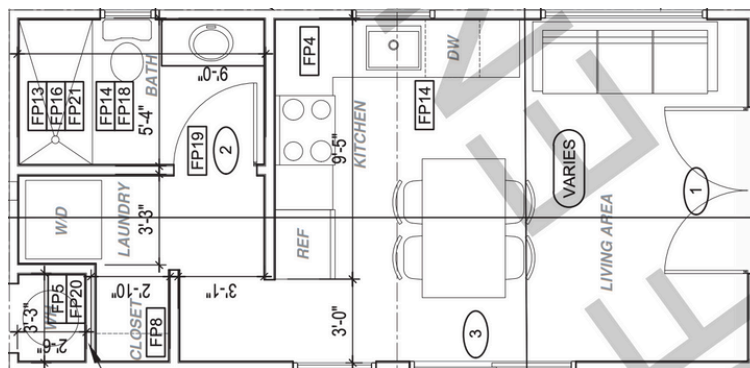
STUDIO

>>> 224 sqft



STUDIO

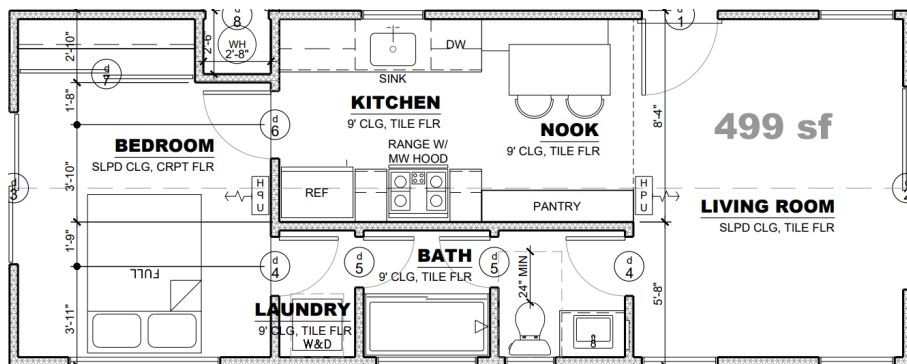
>>> 350 sqft



ENCINITAS

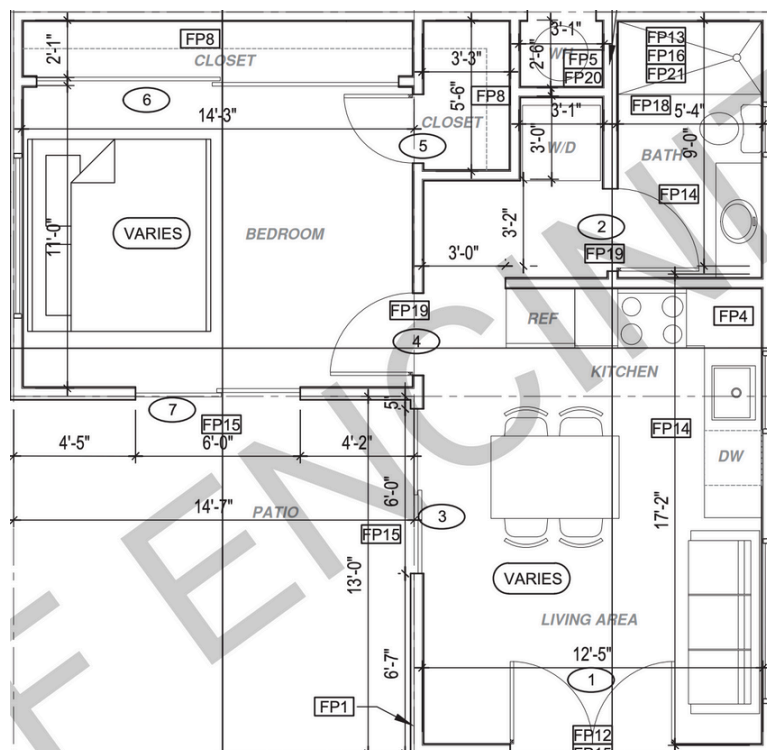
1 BED / 1 BATH

>>> 499 sqft



1 BED / 1 BATH

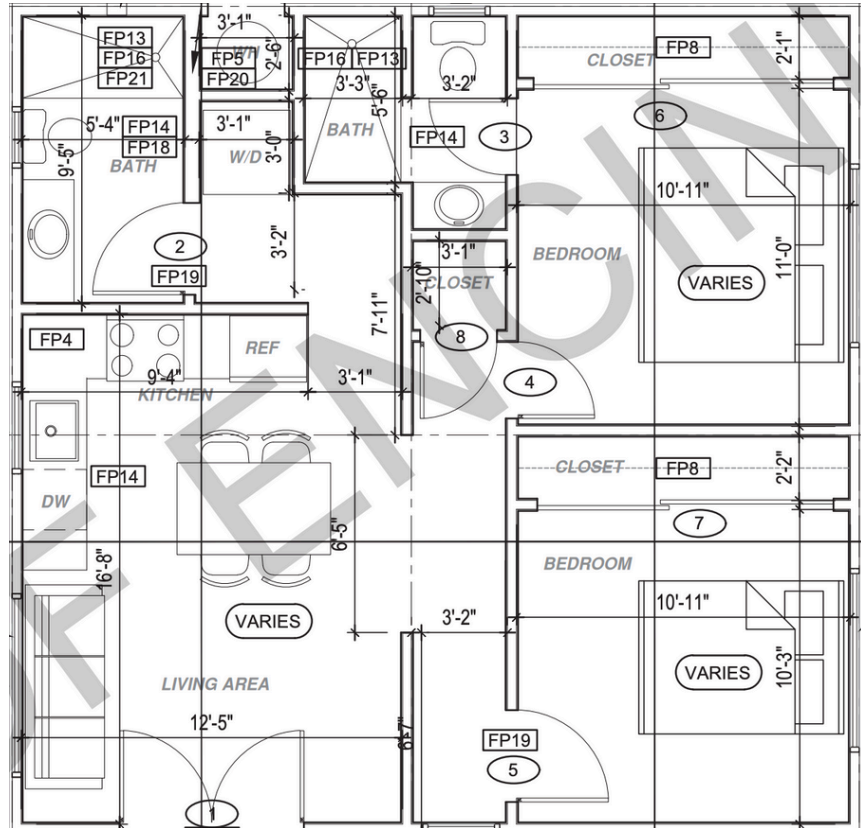
>>> 555 sqft



ENCINITAS

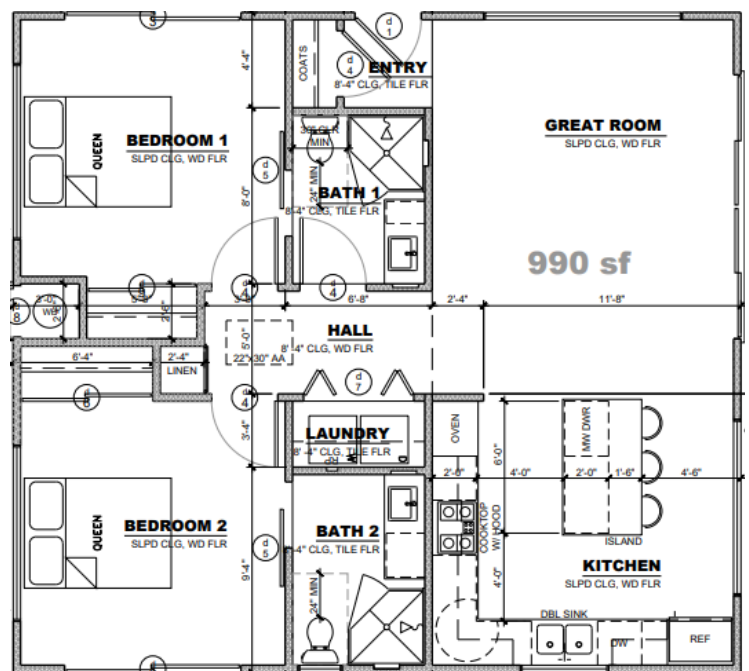
2 BED/ 2 BATH

>>> 745 sqft



2 BED/ 2 BATH

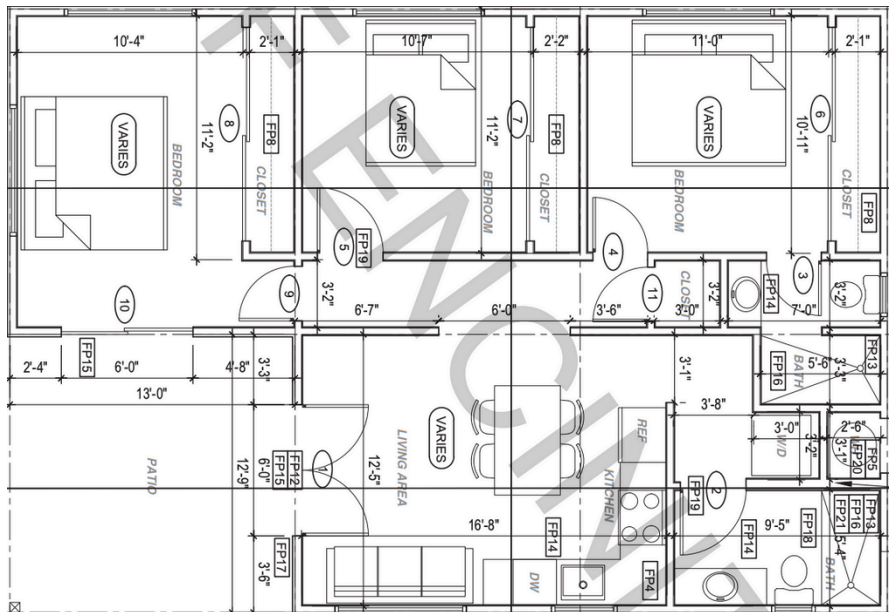
>>> 990 sqft



ENCINITAS

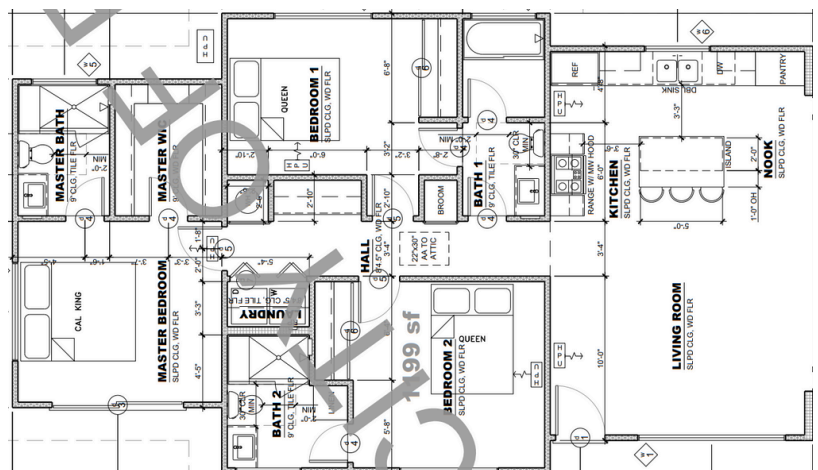
3 BED / 3 BATH

>>> 938 sqft



3 BED / 3 BATH

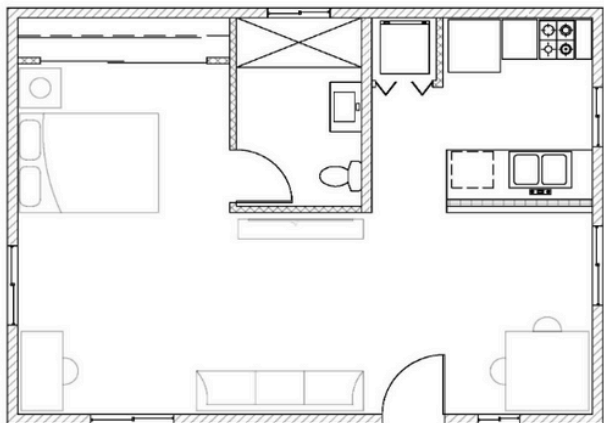
>>> 1,199 sqft



SAN DIEGO COUNTY

Several cities in San Diego County have pre-approved ADU (Accessory Dwelling Unit) plans to make building a backyard home easier and more affordable. These "Permit-Ready ADU" programs help homeowners skip a lot of the red tape by offering free or low-cost blueprints that are 85% complete and meet city requirements.

These programs help homeowners save time and money by reducing paperwork and approval wait times. If you're thinking about adding a rental unit or guest house in San Diego County, these plans make it easier to get started.

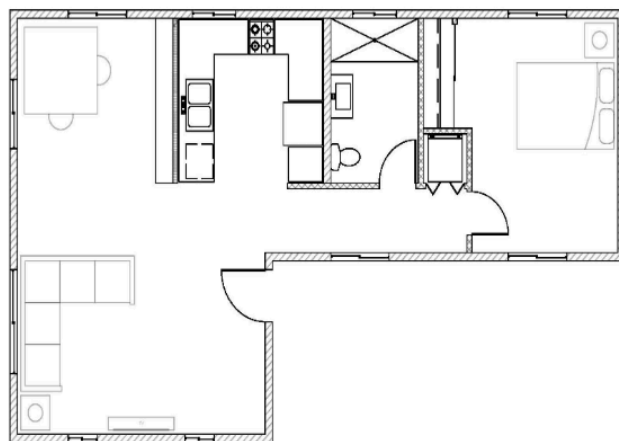


1 BED/ 1 BATH

>>> 600 sqft

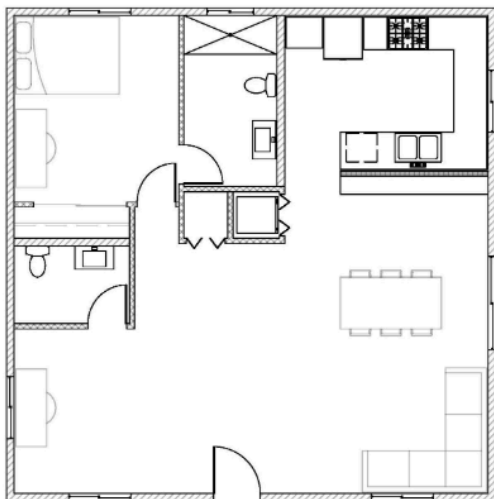
1 BED / 1 BATH

>>> 800 sqft

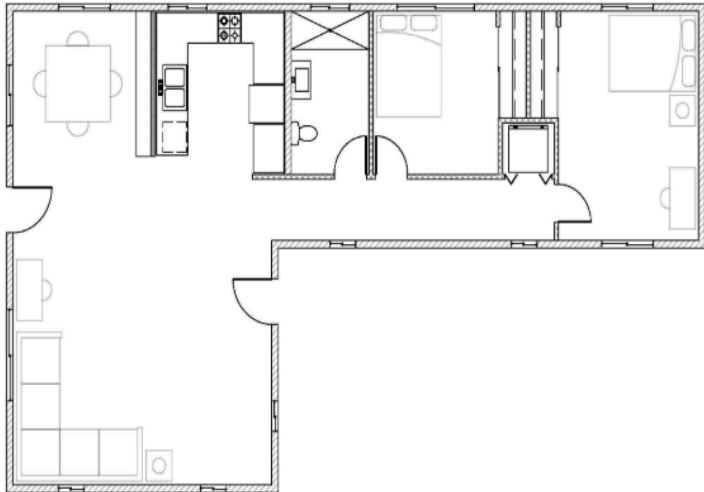


1 BED / 1.5 BATH

>>> 1,000 sqft



SAN DIEGO COUNTY

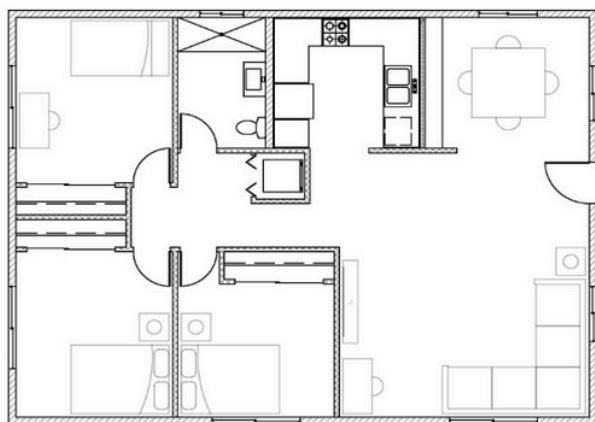
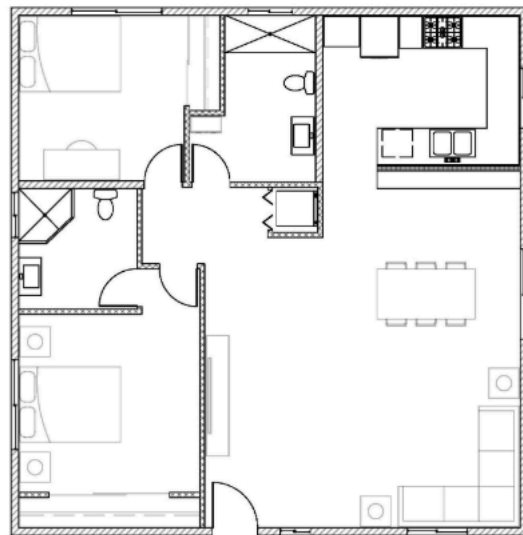


2 BED/ 1 BATH

>>> 1,200 sqft

2 BED / 2 BATH

>>> 1,200 sqft



3 BED / 1 BATH

>>> 1,200 sqft

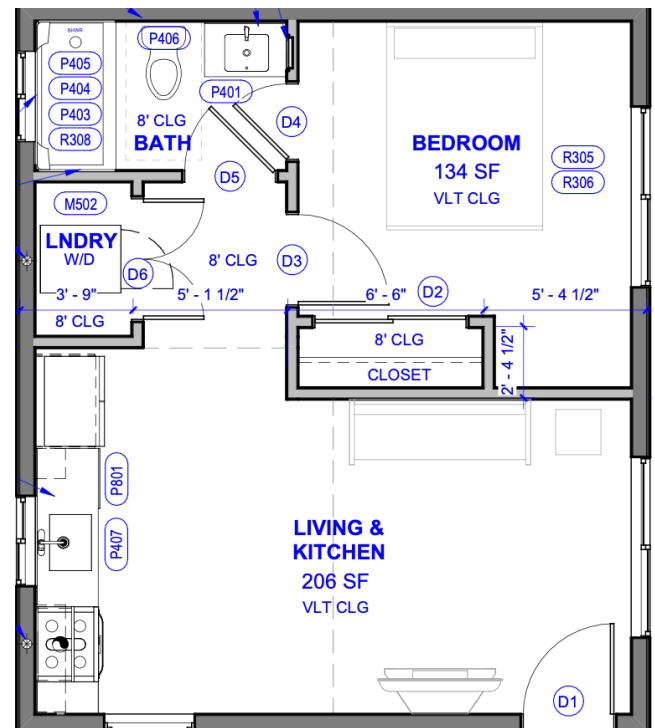
CHULA VISTA

Several cities in San Diego County have pre-approved ADU (Accessory Dwelling Unit) plans to make building a backyard home easier and more affordable. These "Permit-Ready ADU" programs help homeowners skip a lot of the red tape by offering free or low-cost blueprints that are 85% complete and meet city requirements.

These programs help homeowners save time and money by reducing paperwork and approval wait times. If you're thinking about adding a rental unit or guest house in Chula Vista, these plans make it easier to get started.

1 BED, SQUARE-SHAPED

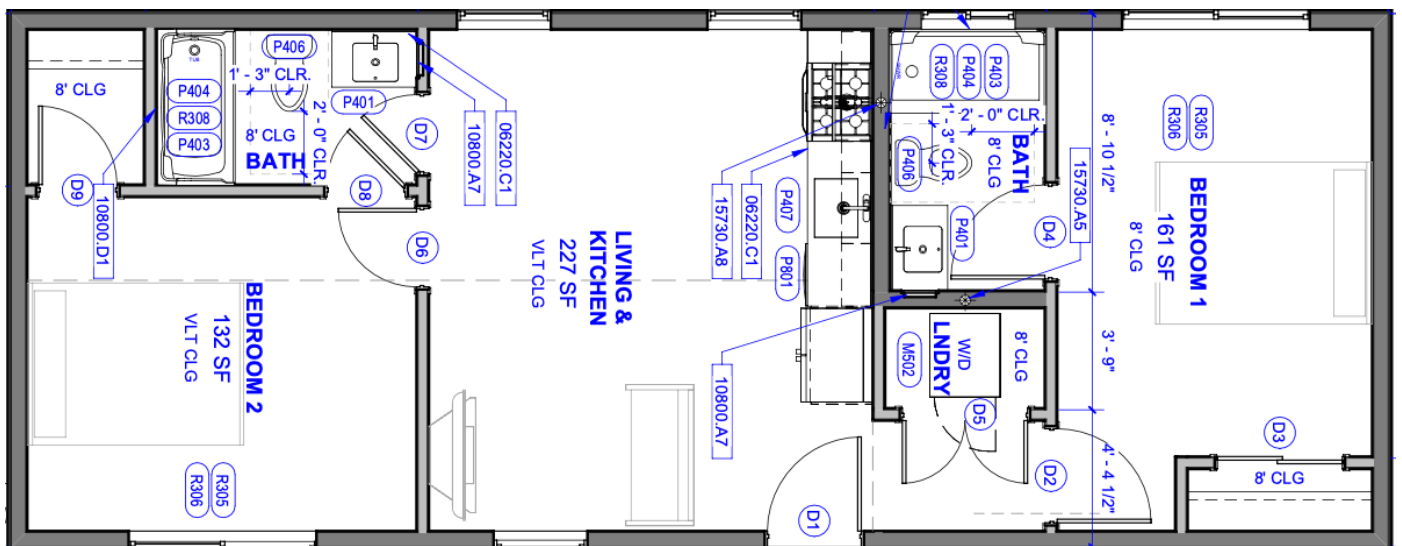
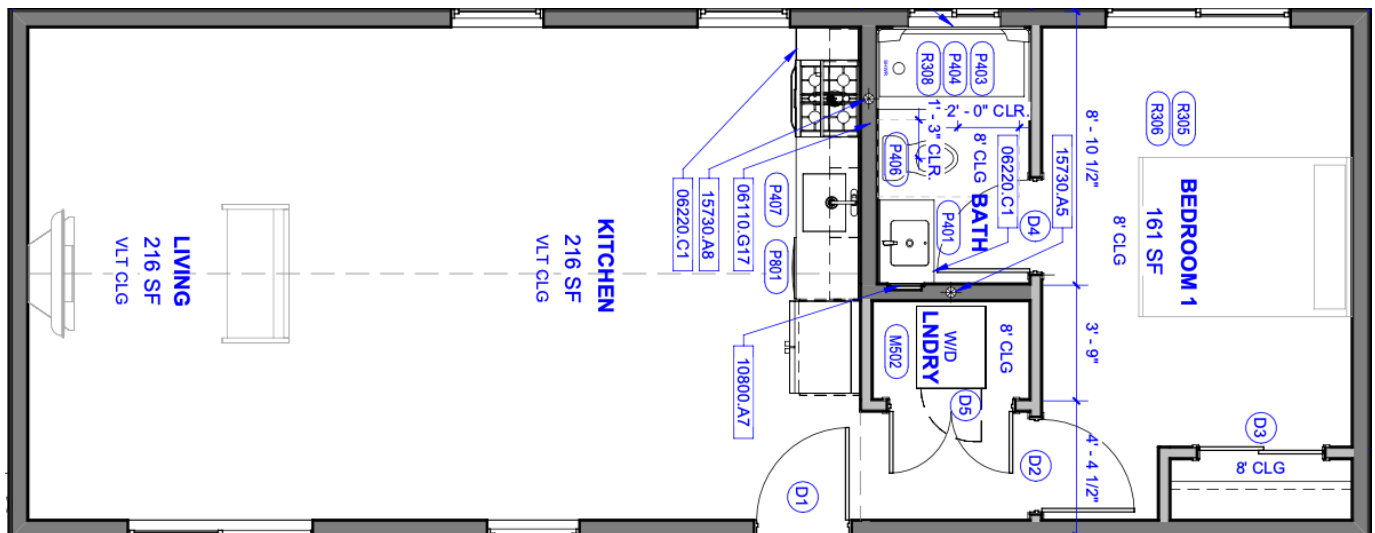
>>> 498 sqft



CHULA VISTA

1 OR 2 BED,
RECTANGLE-SHAPED

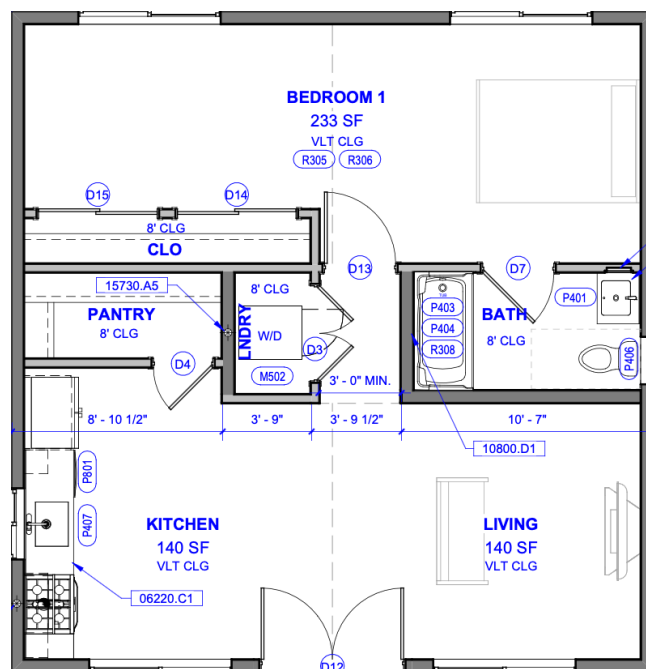
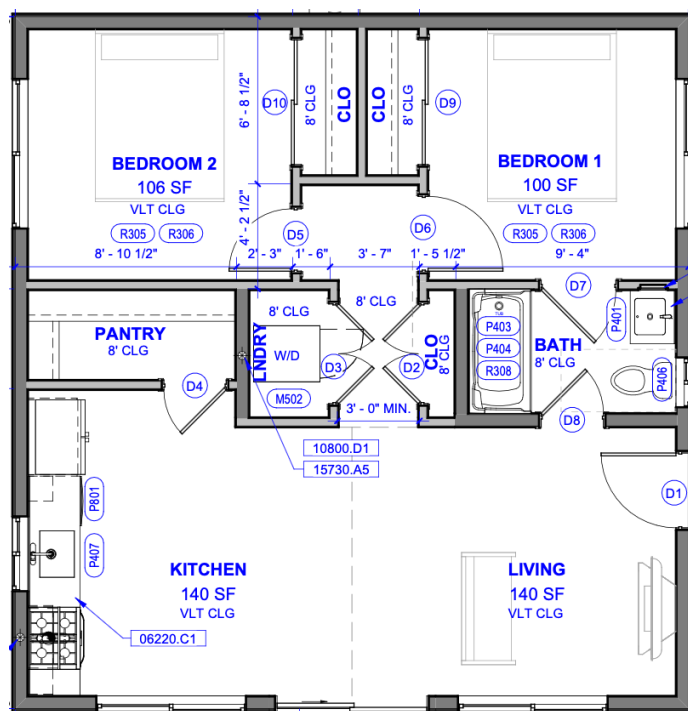
>>> 748 sqft



CHULA VISTA

1 OR 2 BED, SQUARE-SHAPED

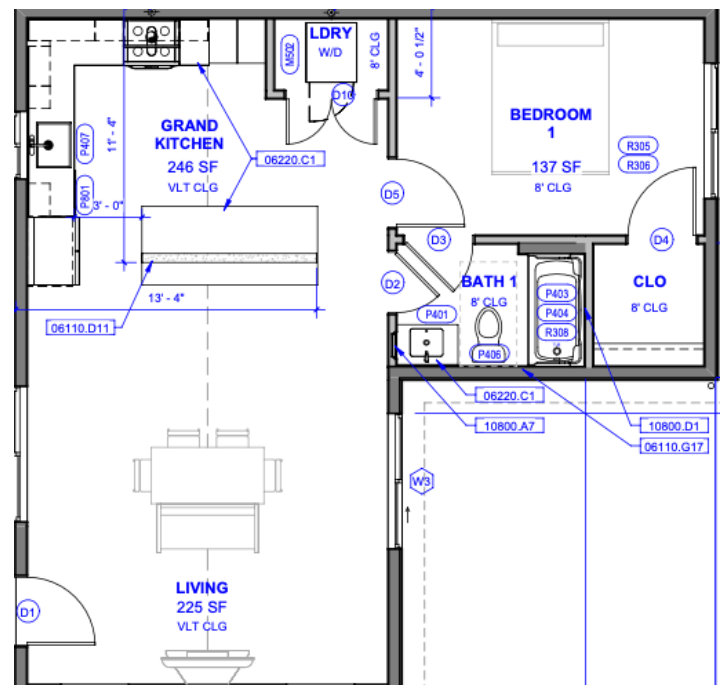
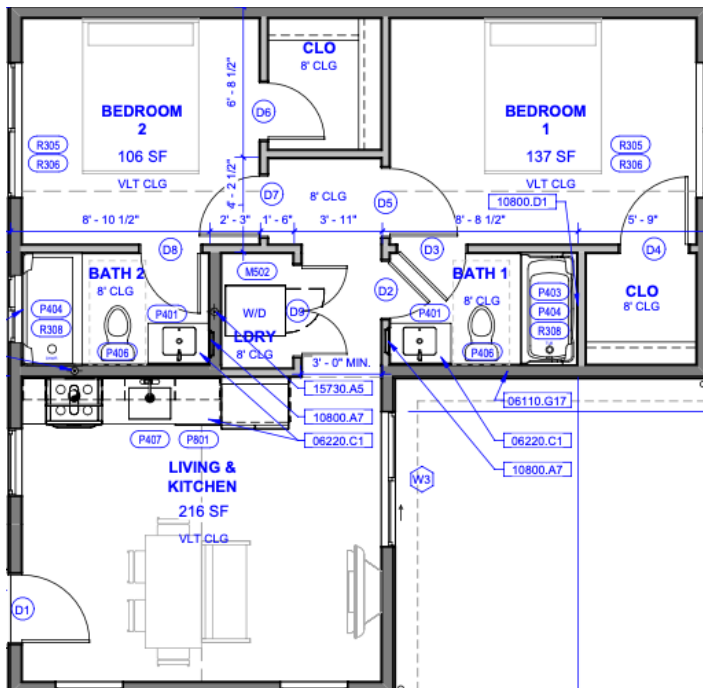
>>> 749 sqft



CHULA VISTA

1 OR 2 BED, L-SHAPED

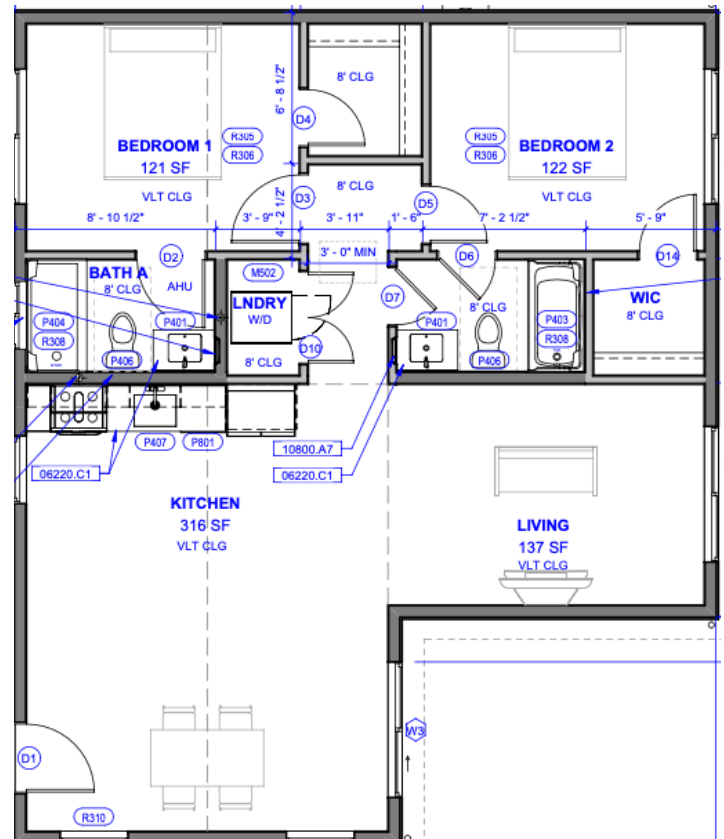
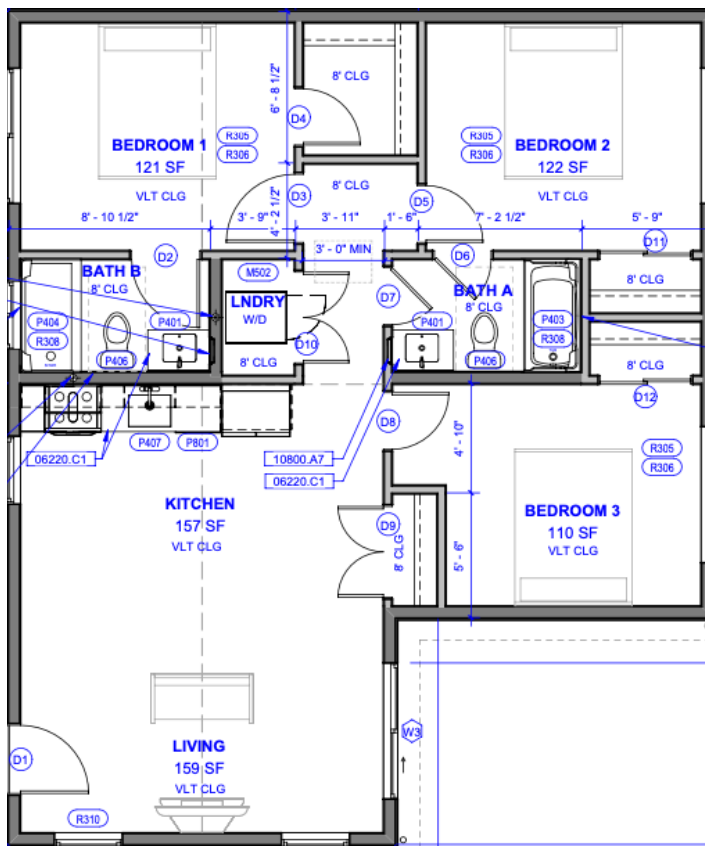
>>> 749 sqft



CHULA VISTA

2 OR 3 BED, L-SHAPED

>>> 999 sqft



1,119 sqft

