

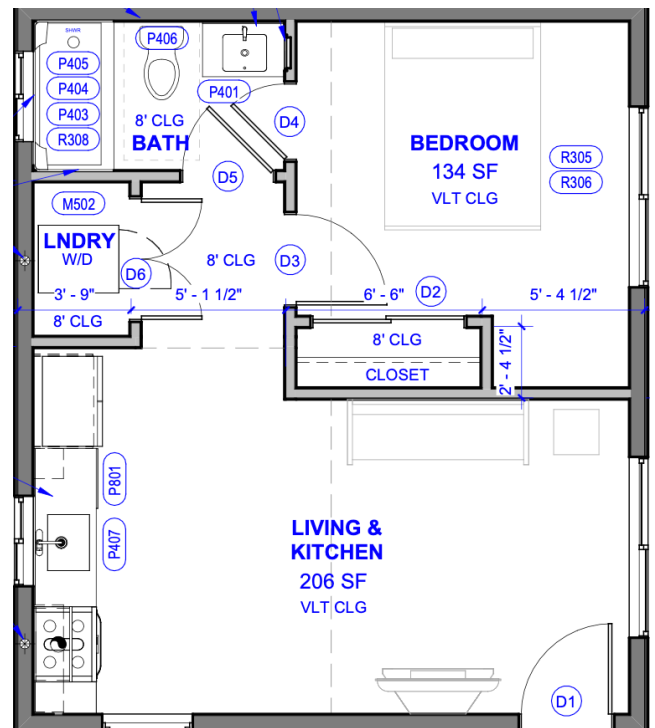
# CHULA VISTA

Several cities in San Diego County have pre-approved ADU (Accessory Dwelling Unit) plans to make building a backyard home easier and more affordable. These "Permit-Ready ADU" programs help homeowners skip a lot of the red tape by offering free or low-cost blueprints that are 85% complete and meet city requirements.

These programs help homeowners save time and money by reducing paperwork and approval wait times. If you're thinking about adding a rental unit or guest house in Chula Vista, these plans make it easier to get started.

## 1 BED, SQUARE-SHAPED

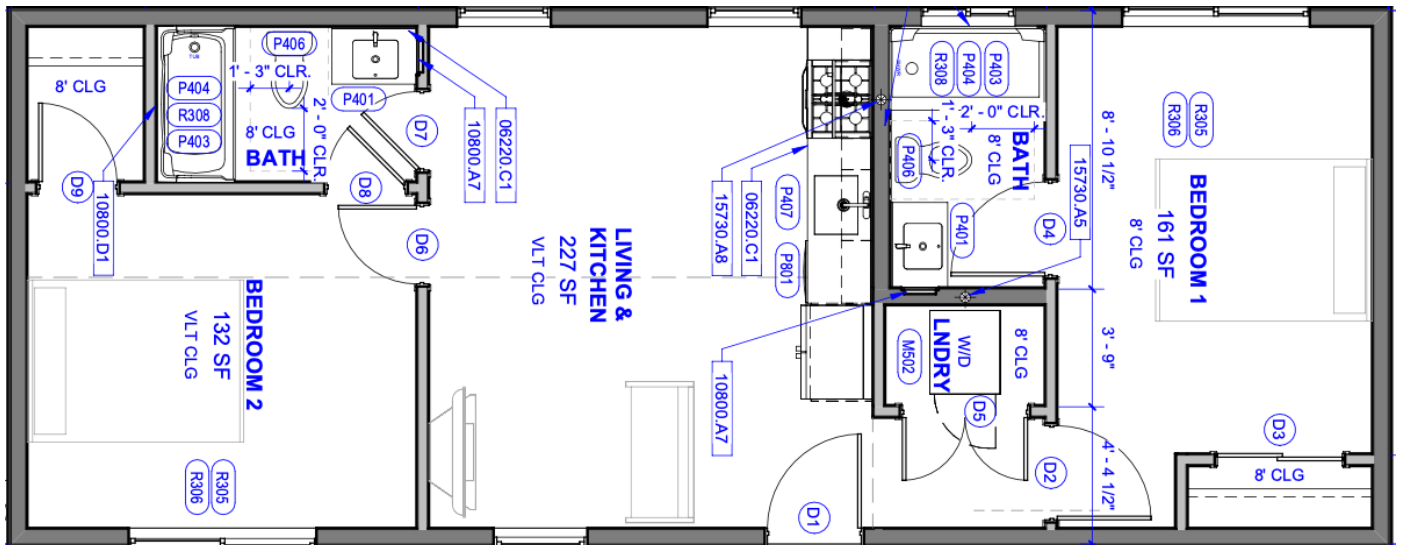
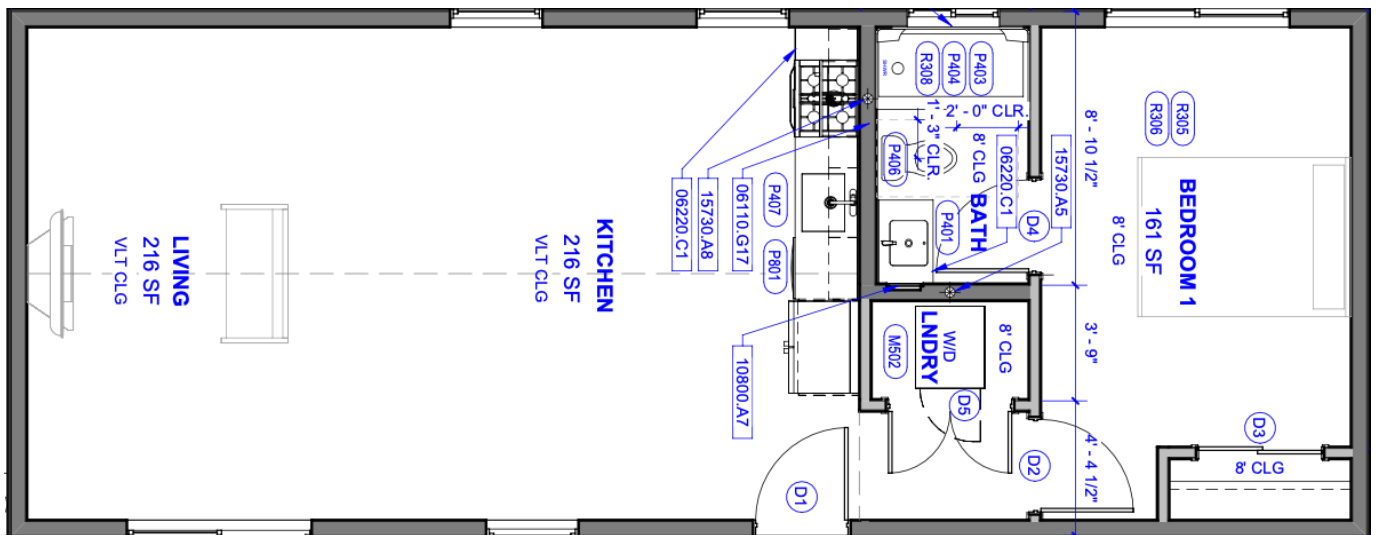
>>> 498 sqft



# CHULA VISTA

1 OR 2 BED,  
RECTANGLE-SHAPED

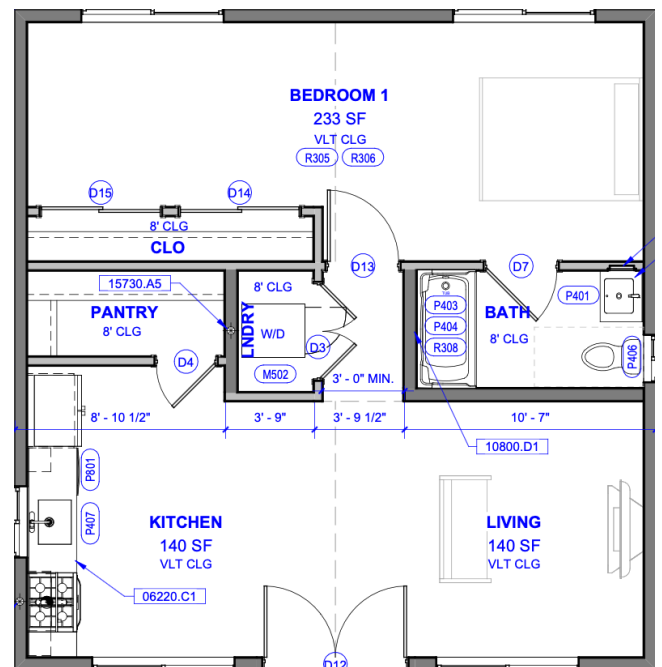
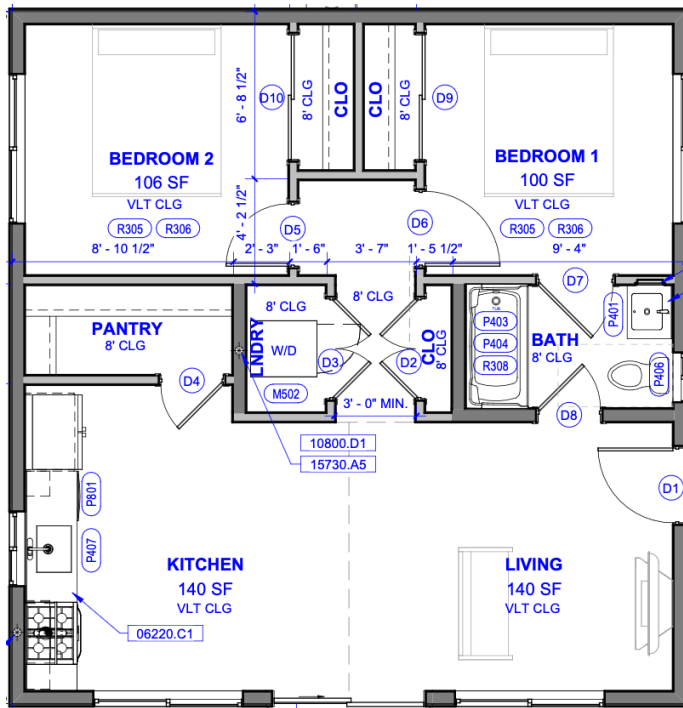
748 sqft



# CHULA VISTA

1 OR 2 BED, SQUARE-SHAPED

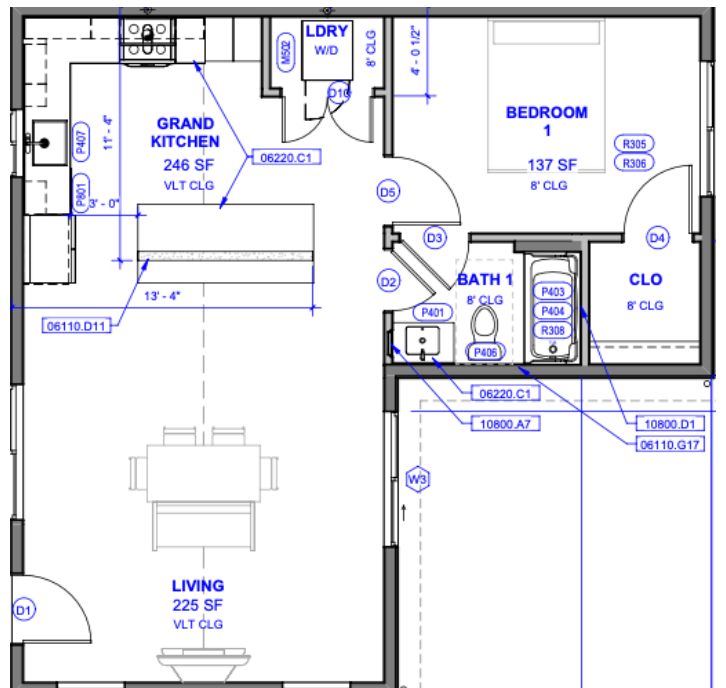
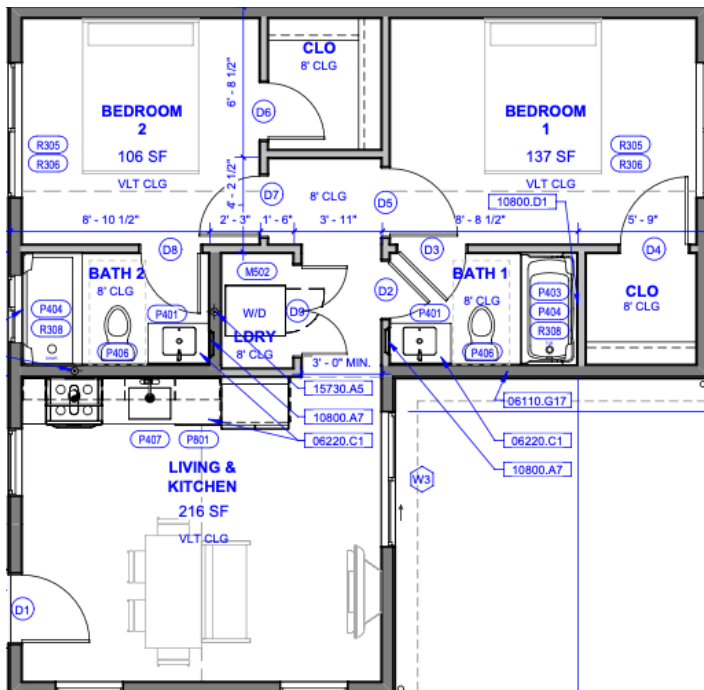
749 sqft



# CHULA VISTA

1 OR 2 BED, L-SHAPED

749 sqft

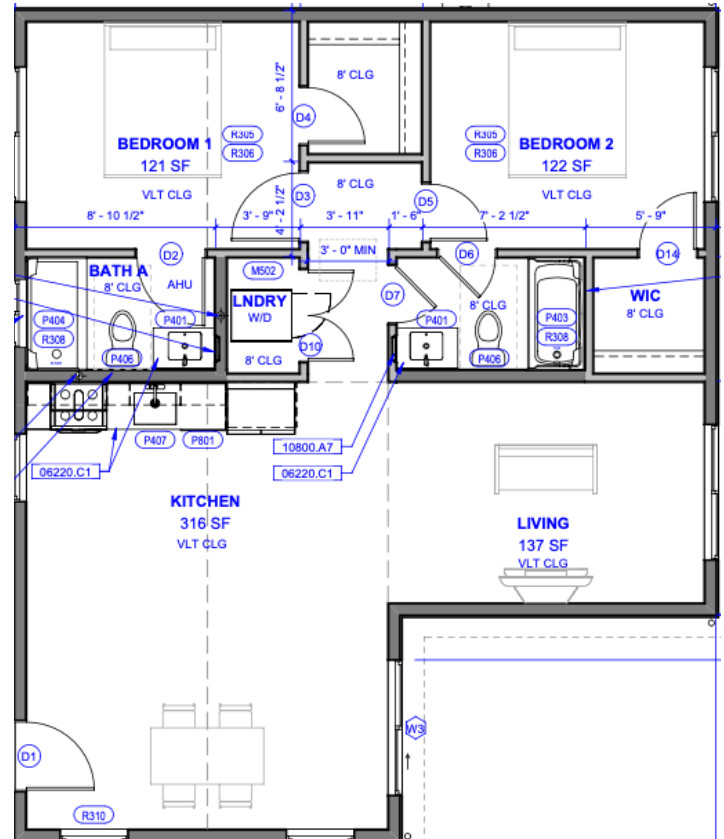
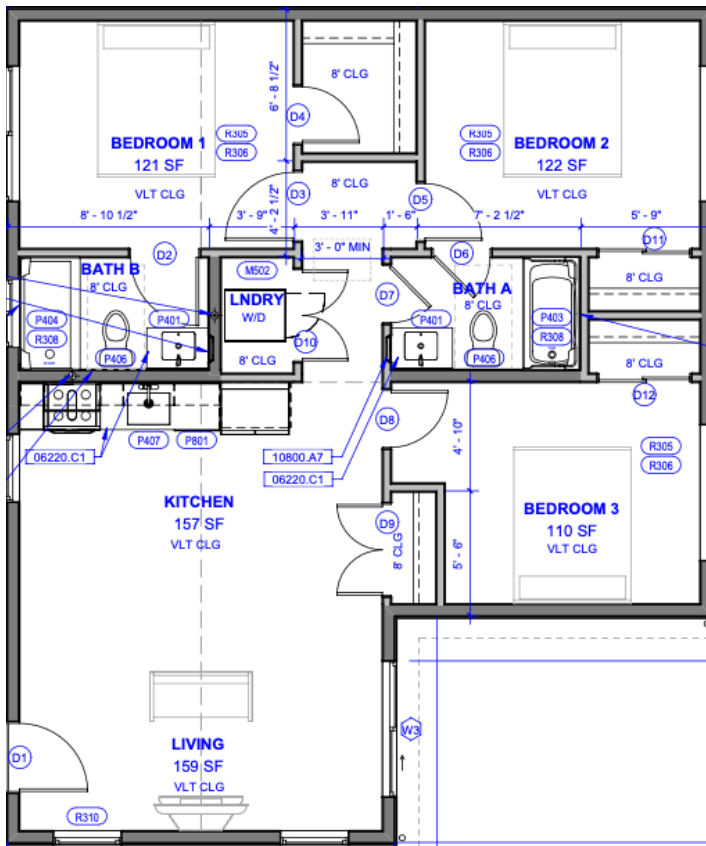




# CHULA VISTA

2 OR 3 BED, L-SHAPED

999 sqft



# CHULA VISTA

2 OR 3 BED, L-SHAPED

1,119 sqft

